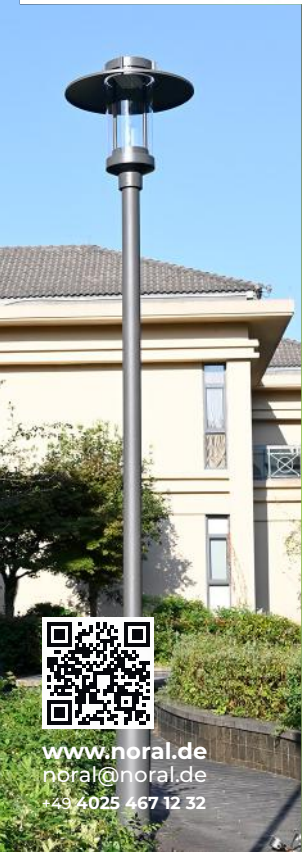




Ledo NL8010

Die-Cast Aluminium Housing



GENERAL INFORMATION

Mounting Module	Post top entry
Operating Temperature	-40 °C / +55°C
Storage Temperature	-40°C / +80°C
Glass Mounting Options	Capsule mounting system
LED Modules	Removable / Replaceable optical unit
Lens Options	Project specific lens options
Main Reference/ Company Standards	EN 60598-1, EN 60598-2-1, EN 62471, EN 60068-2-11, EN60068-2-52, ISO9227, ASTM B117, ASTM D3359-78, ISO 4628-2, ISO 4628-4, EN 60529, EN 62262, ANSIC136.10-2017, ANSIC136.2-2018, EN 62031, IEC 62384, ASTM D3359, EN ISO 2409, IES LM 80-15, IES LM 82-12, IES LM 84-14, IES LM 85-14, IES TM 21-11, CE, RoHS, ISO9001, ISO14001, ISO18001, ISO5001, ISO45001, ISO39001, EAC

HOUSING AND MATERIALS

Housing	Non corrosive high pressure die-cast aluminium
Gasket	Individual and sealed module
Housing Finish	UNI EN1706 powder painted
Refractor	UV-stop PC lamp cover Sealed lamp housing
Cable Gland	IP65, Plastic PG9
Standard Colour	RAL 9005 RAL 7015
Tightness Level	IP65, IP66 (optional)
Impact Housing Resistance	IK09 (10 J)
Impact Glass Resistance	IK08 (5 J) IK09 (optional) (10 J) IK10 (optional) (20 J)
Vibration Test	Compliant with modified IEC 68-2-6 (0.5G), ANSIC136.31 (3G-5G)

ELECTRICAL INFORMATION

Electrical Class	Class I, Class II (optional)
Nominal Voltage	220-240V 50/60 Hz EU 110-277V 50/60 Hz (optional) NORTH AMERICA
Led Current	500mA, 600mA, 700 mA
Power Factor	≥0.9 (at full load)
Driver	Constant current, Thermal protected, Voltage regulated, Harmonic filter protection
Control System	On-off (standard), Bluetooth, DALI, 1-10V DIM, Stand alone automation
Mains connection	For cable max section 2,5 mm ² Outgoing cable H05RN-F 2/3/5 x 1,5 mm ² Length on request.(optional)
Electromagnetic compatibility (EMC)	IEC 61000, EN 55015, IEC 61000-3-2, IEC 61000-4-5, IEC 61547, IEC 61000-3-3, IEC 61000-4-2, IEC 61000-2-2, IEC 61000-4-11, IEC 61643-11

OPTICAL INFORMATION

Led colour temperature	2700K (warm white), 3000K (warm white) 4000K (neutral white) (standard), 5000K (cool white), 5700K (cool white), 6500K (cool white), Other (amber, blue, green, red)
Colour rendering index (CRI)	CRI ≥70, CRI ≥80 (optional), CRI ≥90 (optional)
Upward light output ratio	0%
Photobiological safety class	IEC 62471
Testing standard	LM 79-19, EN 13032-1 (all measurements in ISO17025 accredited laboratory)
Lifetime of the LED's	Tq= 25 °, 700 Ma 187.000h -L90B10 Tq= 55 °, 700 Ma 156.000h -L90B10



www.noral.de
noral@noral.de
+49 4025 467 12 32

Ledo NL8010

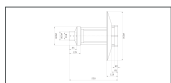
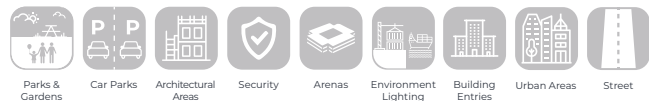
Die-Cast Aluminium Housing



Number of Power LED's/ Rating	Luminaire Output Flux (lm)		W (mm)	L (mm)	h (mm)	Item / Box	Average Weight (kg)	Order Code	System Lumen / W (lm)	
	max.	min.							max.	min.
12 / 20W	3300	2500	550	550	550	1	7 kg	L8010-LED0020NW-ECG	165	125
16 / 30W	4950	3750	550	550	550	1	7 kg	L8010-LED0030NW-ECG	165	125
20 / 40W	6600	5000	550	550	550	1	7 kg	L8010-LED0040NW-ECG	165	125
24 / 55W	9075	6875	550	550	550	1	7 kg	L8010-LED0055NW-ECG	165	125

Depending on the luminaire configuration. For more details, please contact us.
Tolerance on LED flux is +/-7% and on total luminaire power +/- 5%.

Main Applications



www.noral.de
noral@noral.de
+49 4025 467 12 32

Noral GmbH reserve the right to modify design and/or production characteristics of their products. photographs and data used in this catalogue are for illustrative purposes are not binging on the company.

The copying or reproduction, in part or in full, of any descriptions, technical data drawings or photographs shown in this catalogue is expressly forbidden.

