



Tellux NL8080

Die-Cast Aluminium Housing



GENERAL INFORMATION

Mounting Module	Surface mountable
Operating Temperature	-35 °C / +45°C
Storage Temperature	-40°C / +80°C
LED Modules	Removable / Replaceable optical unit
Lens Options	360° homogeneous symmetric light distribution
Main Reference/ Company Standards	EN 60598-1, EN 60598-2-3, EN 62471, EN 60068-2-11, EN60068-2-52, ISO9227, ASTM B117, ASTM D3359-78, ISO 4628-2, ISO 4628-4, EN 60529, EN 62262, ANSIC136.10-2017, ANSIC136.2-2018, EN 62031, IEC 62384, ASTM D3359, EN ISO 2409, IES LM 80-15, IES LM 82-12, IES LM 84-14, IES LM 85-14, IES TM 21-11, CE, RoHS, ISO9001, ISO14001, ISO18001, ISO5001, ISO45001, ISO39001, EAC

HOUSING AND MATERIALS

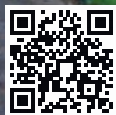
Housing	Non corrosive high pressure die-cast aluminium
Gasket	Silicon or polyurethane without junction points.
Housing Finish	Electrostatic powder paint
Refractor	Lamp housing is made by die cast aluminium UV resistant (optional)
Cable Gland	IP65, Plastic PG9
Standard Colour	RAL9005 RAL7015
Tightness Level	IP65, IP66 (optional)
Impact Housing Resistance	IK10 (20 J)
Vibration Test	Compliant with modified IEC 68-2-6 (0.5G), ANSI C136.31 (3G-5G)

ELECTRICAL INFORMATION

Electrical Class	Class I
Nominal Voltage	100-240V 50Hz EU
Led Current	300mA
Power Factor	≥0.9 (at full load)
Driver	Constant current, thermal protected, voltage regulated, harmonic filter protection
Control System	On-off (standard), Bluetooth, DALI, 1-10V DIM, Stand alone automation
Mains connection	For cable max section 2,5 mm ² Outgoing cable H05RN-F 2/3/5 x 1,5 mm ² Length on request.(optional)
Electromagnetic compatibility (EMC)	IEC 61000, EN 55015, IEC 61000-3-2, IEC 61000-4-5, IEC 61547, IEC 61000-3-3, IEC 61000-4-2, IEC 61000-2-2, IEC 61000-4-11, IEC 61643-11

OPTICAL INFORMATION

Led colour temperature	2700K (warm white), 3000K (warm white) 4000K (neutral white) (standard), 5000K (cool white), 5700K (cool white), 6500K (cool white), Other (amber, blue, green, red)
Colour rendering index (CRI)	CRI ≥70, CRI ≥80 (optional), CRI ≥90 (optional)
Upward light output ratio	0%
Photobiological safety class	IEC 62471
Testing standard	LM 79-19 , EN 13032-1 (all measurements in ISO17025 accredited laboratory)
Lifetime of the LED's	Tq= 25 ° , 300mA 60.000h Tq= 55 ° , 300mA 35.000h



Tellux NL8080

Die-Cast Aluminium Housing



Power Rating	Luminaire Output Flux (lm)		W (mm)	L (mm)	h (mm)	Item / Box	Average Weight (kg)	Order Code	System Lumen / W (lm)	
	max.	min.							max.	min.
5W	825	625	100	100	600	1	2.5 kg	L8080B-LED0005NW-ECG	165	125
7W	1155	875	100	100	600	1	2.5 kg	L8080B-LED0007NW-ECG	165	125

Depending on the luminaire configuration. For more details, please contact us.
Tolerance on LED flux is +/-7% and on total luminaire power +/- 5%.

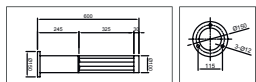
Main Applications



Indoor and Outdoor Facade Lighting Shopping Malls Hotels Cafeterias Restaurants



Offices Building Entries Shops Architectural Areas



www.noral.de
noral@noral.de

+49 4025 467 12 32

Noral GmbH reserve the right to modify design and/or production characteristics of their products. photographs and data used in this catalogue are for illustrative purposes are not binding on the company.

The copying or reproduction, in part or in full, of any descriptions, technical data drawings or photographs shown in this catalogue is expressly forbidden.

